



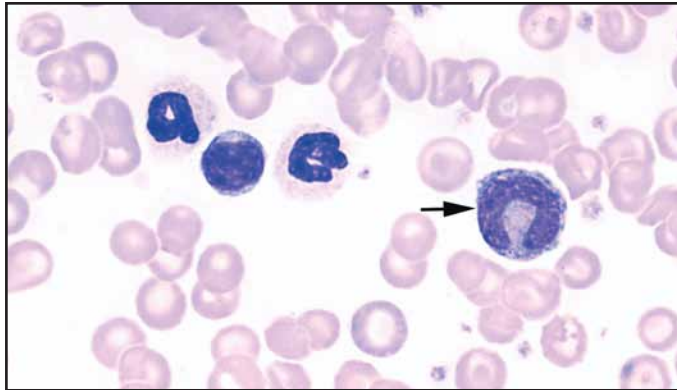
www.asvcp.org

American Society for Veterinary Clinical Pathology Visual Hematology Guide—Leukocytes

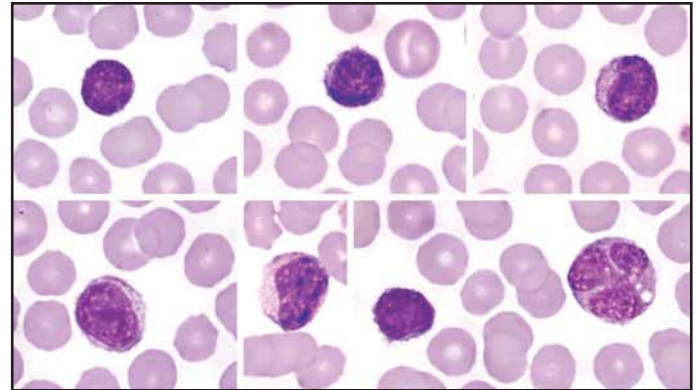


HESKA®

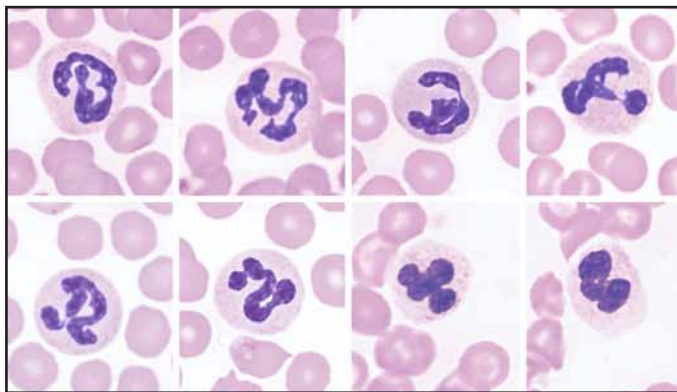
www.heska.com



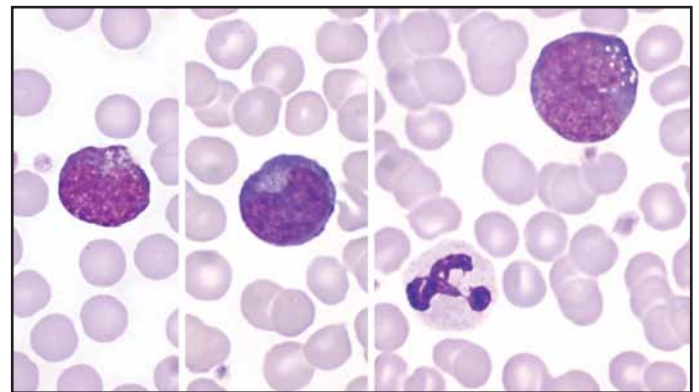
Getting Oriented: 2 Neutrophils, lymphocyte, monocyte (arrow).



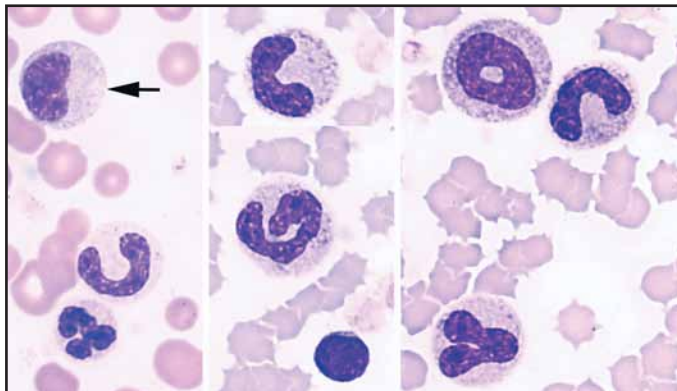
Variation in small lymphocytes; 1 monocyte lower right.



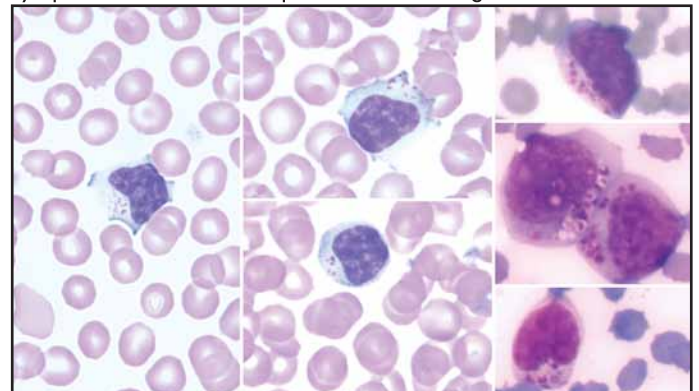
Variation in segmented neutrophil nuclear shape.



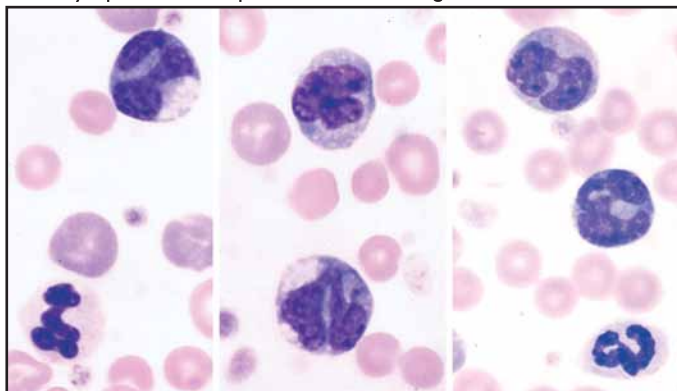
Variation in reactive lymphocytes (immunocytes), note royal blue cytoplasm with occasional perinuclear clearing.



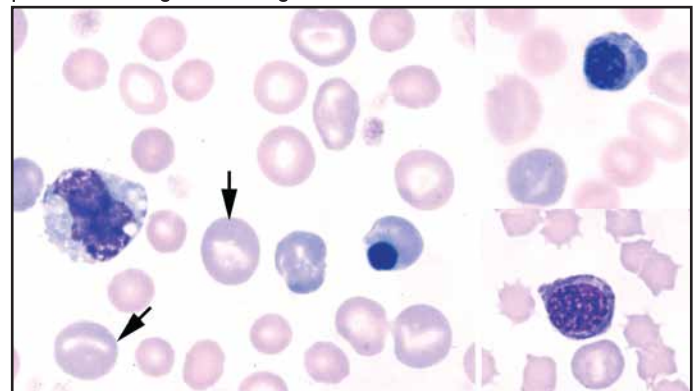
Left panel: seg, band, and metamyelocyte (arrow). Right panels show cytoplasmic basophilia of toxic change in a cat.



Variation in large granular lymphocytes. LGL leukemia in cat, right panel; note large cell and granule size.

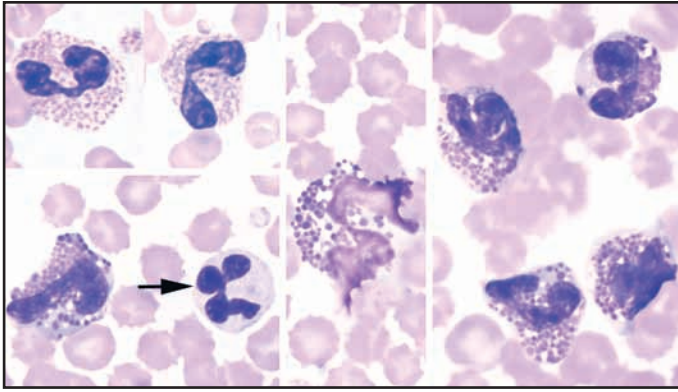


Variation in monocyte morphology. Note larger size and blue-gray cytoplasm. Nuclear shape and presence of vacuoles is variable. Two neutrophils present for comparison.

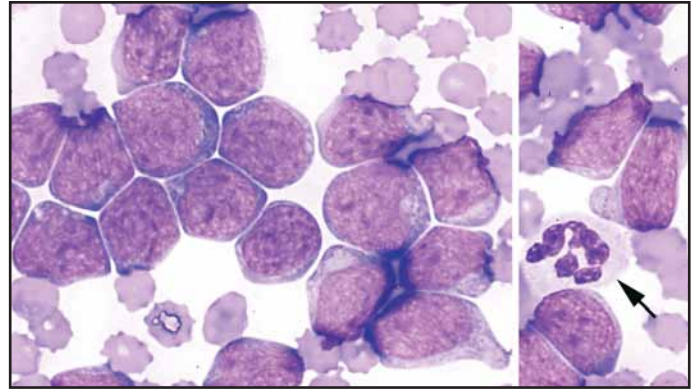


Metarubricyte and rubricytes. Note condensed to pyknotic nuclei. The size and cytoplasm color is similar to polychromatophilic cells (arrows.) Monocyte present on left.

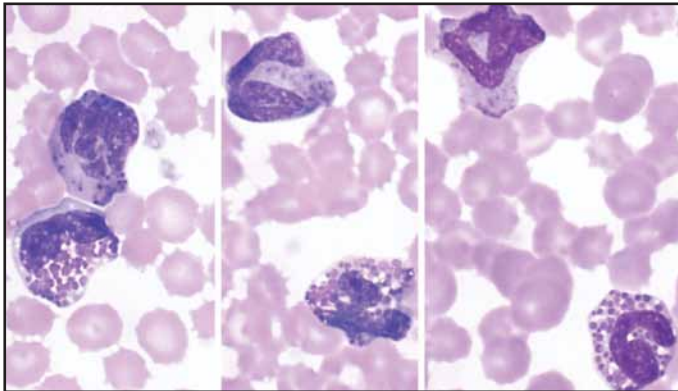
Published courtesy of Heska Corporation, in collaboration with ASVCP. Digital image engineering by G. Weiser, DVM, DACVP.



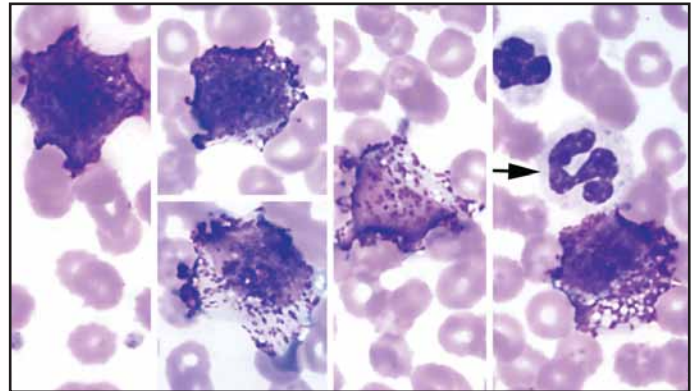
Variation in canine eosinophil morphology, one neutrophil (arrow). Two feline eosinophils in upper left panel.



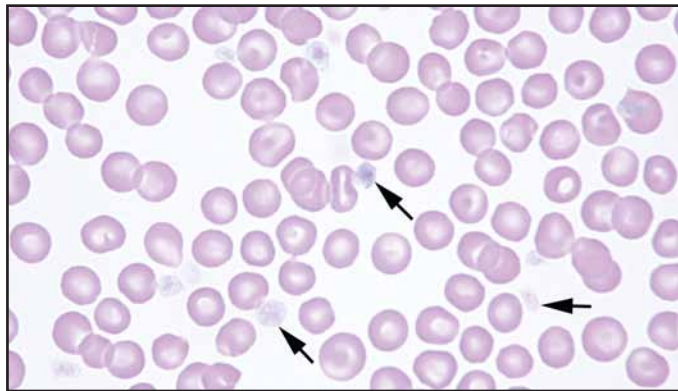
Blast cells from acute lymphoblastic leukemia. Neutrophil for size comparison (arrow).



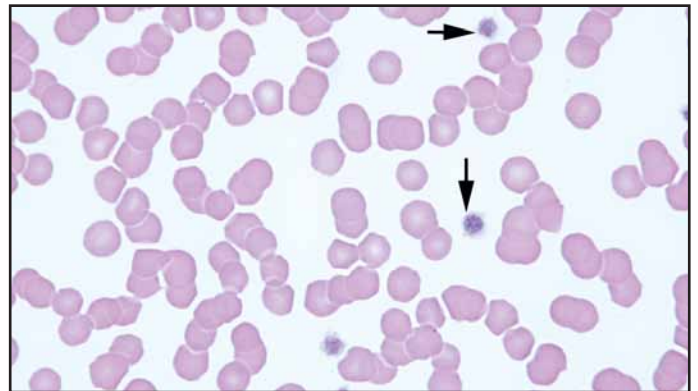
Canine basophils (across top) compared with eosinophils (across bottom). Note sparse basophilic granules.



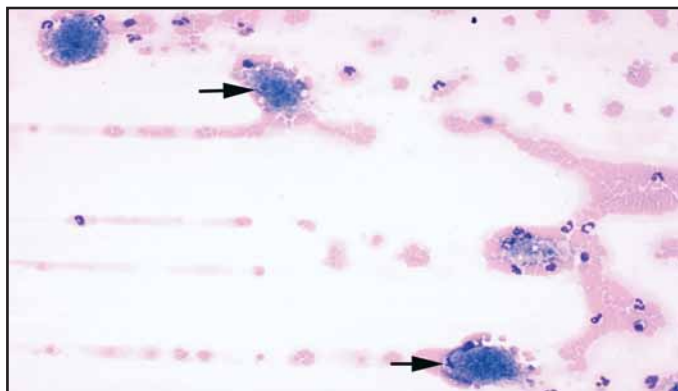
Mast cells in case of mast cell leukemia. Note non-segmented nuclei. Two neutrophils (arrow).



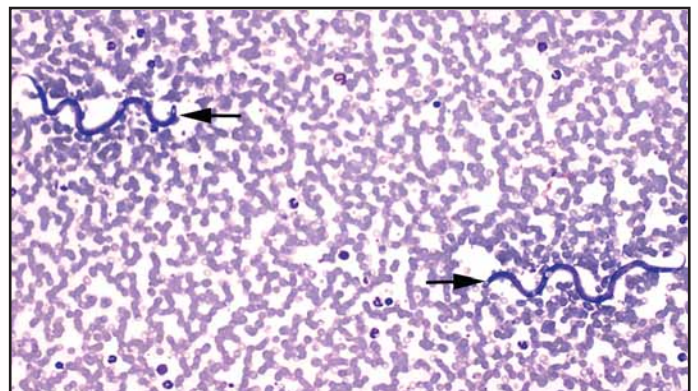
Normal canine erythrocyte and platelet (arrows) morphology.



Normal feline erythrocyte and platelet (arrows) morphology. Erythrocytes have smaller diameter and less central pallor.



Low power view of platelet microclots (arrows) on feathered edge.



Low power view of microfilaria (arrows).