



# NEWSLETTER

## AMERICAN SOCIETY FOR VETERINARY CLINICAL PATHOLOGY

October 2008

Newsletter #3

### Contents

President's Message.....	2	Executive Board News.....	22
Position Announcement: Web Manager..	3	Featuring One of Our Own.....	23
2008 ACVIM Forum - A Success.....	4	VCP Journal Update.....	23
Highlights for 2009 ACVIM Forum.....	5	General Information.....	24
2008 ASVCP/ACVP Meeting Schedule..	6	Upcoming Meetings.....	25
2008 ASVCP Pre-Meeting Workshop.....	14	Job Opportunities.....	25
ASVCP Committee Updates.....	15	2008 Case Set Order Form.....	27

### Important Dates

October 23-29, 2008	51 <sup>st</sup> Annual AAVLD/USAHA Meeting, Greensboro, NC
November 14, 2007	Pre Conference Workshop for the Annual ASVCP/ACVP Meeting
November 15-19, 2008	Annual ASVCP/ACVP Meeting, San Antonio, TX
November 16, 2008	ASVCP Annual Business Meeting, San Antonio, TX

## President's Message

Dear ASVCP Members,

Our annual meeting November 15-19 in San Antonio is fast approaching. It should prove to be one of best yet—packed with opportunities to learn about the full diversity of our field. Some highlights this year include:

- ❖ A comprehensive workshop on **biomarker development** organized by our Regulatory Affairs Committee on Saturday
- ❖ A very timely symposium on **clinical pathology in the toxicology field** sponsored by the Education Committee on Sunday morning
- ❖ A terrific program from our **Veterinary Laboratory Professionals** group encompassing a very wide range of topics on Sunday, Monday and Tuesday
- ❖ Our scientific sessions with outstanding platform presentations by **Dr. Mark Knepper of the NIH National Heart, Lung, and Blood Institute** on Sunday and Tuesday

But wait, there's more! Between attending these activities and strolling on the lovely River Walk, please also plan to join us for:

- **The ASVCP Business Meeting** at Sunday at 4:30 pm
- Our **Reception** on Monday at 5:15 pm
- The **Clinical Chemistry Case Session** on Monday at 7 pm
- The **Case Review Session** on Tuesday at 1:30 pm

The ASVCP Strategic Plan is essentially complete and will be discussed in greater detail at the Business Meeting. As you've seen on the listserv and in this issue, one outcome of this effort was to modify the former Electronic Communications and Technology Committee and create a member-based Website Advisory Group and Web Master position to oversee the Society's web and listserv needs. Other initiatives revolve around enhancing the visibility of ASVCP amongst members and outside our organization. Outcomes of this have been to expand the current Membership Committee to become an Outreach Committee. This group has made several new proposals including staffing our booth at the annual meeting and holding a poster contest to highlight ASVCP.

The year has flown by and there are many more things yet to be accomplished on behalf of ASCVP. With the installation of new officers and transition of Committee Chairs at the annual meeting, we look forward to the continued infusion of dedication, ideas, and energy from our membership. While you're enjoying the balmy evenings in San Antonio and the excellent program offered by ASVCP and ACVP, please consider joining one of our committees or running for future office.

I look forward to seeing you in San Antonio!

Best regards,  
Holly

## **Position Announcement: ASVCP Website Manager Needed**

To optimize the role of the internet as a communication and outreach tool for our Society, the ASVCP Executive Board is seeking a Web Manager to lead a volunteer member-based advisory team to provide oversight of the ASVCP website. Under the leadership of the Website Manager, the advisory team will be responsible for ensuring the quality, accuracy and scientific integrity of ASVCP web pages. The Manager will work in conjunction with the ASVCP's Executive Director and Management Company (The Rees Group) to implement web pages, maintain accurate, up-to-date content of interest to members, and to oversee day-to-day management of the web site.

### **Responsibilities**

1. Create and implement web pages and web-based programs on behalf of the ASVCP Executive Board, Committees and members. Create and implement a vision for promoting the Society for the future through web content and tools.
2. The Manager and advisory team will be primarily responsible for web-content (page content, links, web-site organization, etc.) and ASVCP listserv oversight; technical website programming and listserv maintenance will be provided by the ASVCP Management Company.
3. Regularly update web pages to maintain timeliness and accuracy of information. Review relevance and scientific integrity of content of web pages. Review, spell-check, error check all web content prior to and after release, to maintain high level of quality.
4. Perform day-to-day review of web pages, assuring pages and changes are referenced in the major search engines, and respond to inquiries about the pages.
5. Perform day-to-day review of listserv content to ensure integrity, professionalism, and appropriateness of discussions.
6. Keep current with web tool developments, and web-based instructional and interactive programs in order to use the new features.
7. Routinely interact with ASVCP Officers and Committee Chairs to facilitate their web and listserv needs. Provide regular status reports to the Executive Board.
8. Coordinate electronic communications and announcements for the Society (i.e., communications to membership, notices of the newsletters going live, notices for annual meeting events, applications, etc).
9. Have an understanding of the Society's interactions with other organizations, societies, and institutions and be able to effectively communicate with these groups.

**Requirements**

Dynamic, self-motivated ASVCP member in good standing with experience and skills in website design and maintenance; excellent team leadership skills, excellent writing skills; scheduling flexibility to allow attendance at occasional teleconferences. Have a working knowledge of ASVCP history and organizational structure. Have the ability to interact with information technology personnel to effectively display website content and address listserv issues. Must use own computer.

**Compensation**

An annual stipend of \$4,000 with option to renew.

**Reporting responsibilities**

The Web Manager will be selected by and report to the ASVCP Executive Board. Selection will be made by the Board during their annual meeting. The position will last for a period of one year (Dec. 1, 2008-Nov. 30, 2009) with an option to renew at the discretion of the ASVCP Executive Board. Performance evaluations will be provided by the President with input from the Executive Board, Committee Chairs and others.

**Application**

If interested in this position, please send a cover letter addressing your qualifications and interest, plus a current CV by Oct 15, 2008 to:

ASVCP Executive Board  
ASVCP National Office  
2810 Crossroads Dr., Suite 3800  
Madison, WI 53718-7961

## **Successful ASVCP Sessions Held at the 2008 ACVIM Forum**

At the 26<sup>th</sup> Annual Forum of the American College of Veterinary Internal Medicine in San Antonio, TX this past June, the ASVCP highlighted a slate of five speakers presenting eight hours of sessions that covered updates from a variety of topics of interest to both internists and clinical pathologists. Dr. John Harvey presented biochemical abnormalities in erythrocytes from dogs and cats, and Dr. Roberta Di Terrlizi discussed with erythrocyte membrane disorders in domestic animals. Dr. Sandra MacConkie had presentations about the molecular mechanism of drug-induced hematotoxicity and the molecular mechanism of acetaminophen toxicity in dogs and cats. Dr. Mike Scott provided a good summary on cavitory effusions in the dog and cat and followed with a case study session. On the hemostasis front, Dr. Tracy Stokal presented some new

concepts in hemostasis and Dr. Marjorie Brooks talked about new topics for point of care hemostasis testing. The sessions were very well attended. We thank and congratulate all the speakers for another great year at ACVIM. See below for the ACVIM Forum in 2009!!

## **Highlights for the upcoming 27<sup>th</sup> Annual ACVIM Forum**

**Palais des Congres de Montreal, Montreal, Quebec, June 3 - 6, 2009**

### **MORNING SESSION: BLOOD AND BONE MARROW DISORDERS**

**Dr. Joanne B. Messick**

#### **The Complete Blood Count and Non-Neoplastic Hematopathology (1.0 hr)**

The CBC is the most commonly ordered test in veterinary medicine. Mistakes may be made when interpreting hematologic data that cost time and money and could potentially jeopardize the health of your patient. In this presentation, several problem and/or less usual cases in hematology will be presented and the interpretation of the CBC findings discussed. The pathologic and clinical features, differential diagnoses for these non-neoplastic conditions, and diagnostic pitfalls of each case will be discussed.

**Anne Barger**

#### **Diagnosis and Differential Diagnosis of Abnormal Blood Smears (1.0 hr)**

There is abundant information that can be obtained from examination of blood smears. This presentation will begin with a step-wise approach to the blood smear, moving to a review of clinically important abnormal morphologic findings of red cells, white cells and platelets. Finally, cases will be used to emphasize the importance and utility of blood smear analysis.

**Anne Avery**

#### **Prognostic Indicators in Lymphoma and Leukemia (1.0 hr)**

Flow cytometry, clonality assays and gene expression profiling of canine lymphoma and leukemia will be discussed, with an emphasis on the utility of these assays to subclassify lymphoma and leukemia, and to determine prognosis. Primary data, published and unpublished, will be presented.

**Anne Barger**

#### **Distinguishing Leukemoid Reaction from Chronic Leukemia (1.0 hr)**

A leukemoid reaction refers to a marked leukocytosis (usually in excess of 50,000/ $\mu$ l) that is a physiologic response to an underlying cause. Infection, inflammation, necrosis, paraneoplastic cytokine production, and even an exuberant immune response may be the cause. Such leukemoid responses are often misdiagnosed as chronic leukemia. The features that distinguish these processes will be the focus of this presentation.

**AFTERNOON SESSION: CYTOLOGY FOR THE VETERINARY SPECIALIST****Craig Thompson****Non-Lymphoid Oncytology (2.0 hrs)**

This two hour session will encompass a variety of areas in cytology. Multiple topics will be included and presented not only in a didactic format, but also using a case-based format. Topics that will be covered include: cytologic presentations not routinely seen and thus misinterpreted, new nomenclature of old lesions, infectious agents and cytology of infrequently sampled tissues.

**Rose Raskin****Ocular Cytology (1.0 hr)**

Cytologic examination of ocular specimens is a valuable tool in the workup of eye lesions. Ocular cytologic specimens with tissue correlation when available will be presented. Cytomorphologic criteria for normal ocular specimens, inflammation, cystic masses, tissue injury, and neoplastic lesions will be shown and discussed.

**Rose Raskin****Neurocytology (1.0 hr)**

Neurocytology is challenging, even though CNS cytologic specimens are not uncommon in the clinical setting. This presentation provides a comprehensive overview of cerebrospinal fluid (CSF) cytology and the cytology of CNS tissues and lesions obtained and prepared using fine needle aspiration and squash-smear techniques.

## **2008 ACVP/ASVCP CONCURRENT ANNUAL MEETING PROGRAM**

**November 15-19, 2008**

**Henry B. Gonzalez Convention Center  
San Antonio, TX**

Website: <http://www.acvp.org/meeting>

### ***Friday, November 14, 2008***

5:00 p.m.-10:00 p.m.    **Education Committee Meeting**

### ***Saturday, November 15, 2008***

7:00 a.m.                    Registration Opens

8:00 a.m.-5:00 p.m.    **ASVCP Pre-Meeting Workshop** (available for an additional fee)  
Biomarkers: A Reality Check

8:00 a.m.-9:00 a.m.    Qualification of Biomarkers

- 9:00 a.m.-10:00 a.m. Biological Considerations in the Application of Biomarkers in Preclinical Studies
- 10:30 a.m.-11:30 a.m. Cardiac Biomarkers
- 12:30 p.m.-1:30 p.m. Bone Biomarkers in Preclinical Research: A Ten Year Experience
- 1:30 p.m.-2:30 p.m. Endocrine Biomarkers: Pulses, Surges & Circadian Rhythms
- 3:00 p.m.-4:00 p.m. Renal Biomarkers
- 4:30 p.m.-5:00 p.m. Closing Remarks and Discussion
- 8:00 a.m.-5:00 p.m. **C.L. Davis Foundation Pre-Meeting Workshop (available for an additional fee)**  
Orthopedic Pathology - Fifty Years On: Revisiting 22 Classic Entities from the 1958 ACVP Meeting on Skeletal Disease
- 8:00 a.m.-5:00 p.m. **Second Annual Coalition Scientific Conference** *(by invitation)*
- 1:30 p.m.-5:00 p.m. **ITPIG Pre-Meeting Workshop (available for an additional fee)**  
Advances in Fluorescent Microscopy and Imaging
- 1:30 p.m.-1:40 p.m. Welcome and Introduction
- 1:40 p.m.-2:15 p.m. Not Just a Pretty Picture: Multi-Disciplined Applications of Confocal Microscopy for Toxicological Investigations
- 2:15 p.m.-3:00 p.m. Practical Image Analysis from a Pathologist's Perspective
- 3:15 p.m.-4:00 p.m. Morphologic Endpoint Quantification in Veterinary Pathology: Quantitative Imaging Cytometry and Stereologic Approaches
- 4:00 p.m.-4:45 p.m. Toxicity and Biomedical Imaging of Layered Nanohybrids in the Mouse
- 4:45 p.m.-5:00 p.m. Questions and Discussion
- Sponsored by Schering-Plough Research Institute*
- 6:00 p.m.-8:00 p.m. **ASVCP Teaching Clinical Pathology**
- 6:00 p.m.-9:00 p.m. **Exam Committee Meeting**
- 7:00 p.m.-8:30 p.m. **Opening Reception and Focused Poster Session** (Cash bar and hors d'oeuvres)

### ***Sunday, November 16, 2008***

- 7:30 a.m. Registration Opens
- 8:00 a.m.-5:00 p.m. Career Center Open  
*Sponsored by Covance Laboratories*
- 8:00 a.m.-5:00 p.m. Student and Guest Hospitality Area  
*Sponsored by Merck Research Laboratories*

- 8:00 a.m.-12:00 noon **ASVCP Education Symposium**  
Clinical Pathology and Toxicology: Academic and Industry Perspectives
- 8:00 a.m.-8:05 a.m. Welcome and Introduction
- 8:05 a.m.-8:15 a.m. Drug Development Overview: Where We Fit
- 8:15 a.m.-9:00 a.m. Clinical Pathology in Preclinical Safety Assessment
- 9:00 a.m.-9:45 a.m. An Academic Clinical Pathologist's View of Toxicology Research
- 10:15 a.m.-11:05 a.m. Immunotoxicology: Principles and Practices
- 11:05 a.m.-12:00 noon The Mechanism of Acetaminophen-Induced Toxicity in Dogs and Cats
- 8:00 a.m.-12:00 noon **Career Development Session: Effective Mentoring**
- 8:00 a.m.-8:45 a.m. Principles of Mentorship and Academic Mentoring
- 8:45 a.m.-9:15 a.m. Mentorship and Recruitment of the Next Generation of Veterinary Pathologists
- 9:15 a.m.-9:45 a.m. Mentorship in Investigative Pathology
- 10:15 a.m.-10:45 a.m. Electronic Mentoring for Science Careers
- 10:45 a.m.-11:15 a.m. Personal Mentorship Experiences of the Panel Members
- 11:15 a.m.-11:45 a.m. Mentoring Experiences After Five Years in the Field Open Discussion of Mentoring Needs and Experiences from Selected ACVP Diplomates (Classes of 2003 and 2007)
- 11:45 a.m.-12:00 noon Questions and Discussion
- 8:00 a.m.-12:00 noon **Mini-Symposium: Paleopathology**
- 8:00 a.m.-8:05 a.m. Opening Remarks
- 8:05 a.m.-8:55 a.m. Analysis of Ancient Pathology and the Search for an Appropriate Animal Model
- 8:55 a.m.-9:45 a.m. Pathology and Horned Combat in Ceratopsian Dinosaurs and Bovid Mammals
- 10:15 a.m.-11:05 a.m. Open Wide: Oral Pathology from the Family Tree of the Dinosaurs
- 11:05 a.m.-11:55 a.m. Evidence of Healed Injuries and Disease in *Tyrannosaurus rex*
- 11:55 a.m.-12:00 p.m. Closing Remarks

*Sponsored by GlaxoSmithKline*

- 8:00 a.m.-12:00 noon **Natural Disease Specialty Group Session I**  
Invited Presentations  
Canine Influenza Update  
H5N1 Highly Pathogenic Avian Influenza Virus in Wild Birds  
  
*Sponsored by Huntingdon Life Sciences*
- 9:30 a.m.-4:30 p.m. Exhibits Open  
Specialty Group and Veterinary Student Poster Presentations  
Silent Auction
- 12:15 p.m.-1:15 p.m. **Emerging Disease Focus Seminar**  
Chagas Disease: Human Disease with a Companion Animal Solution
- 12:30 p.m.-4:30 p.m. **ASVCP Veterinary Laboratory Professionals Session I**
- 12:30 p.m.-1:00 p.m. Welcome and Veterinary Laboratory Professionals (VLP) Update
- 1:00 p.m.-2:00 p.m. What's New in Inflammatory Myopathy and Myasthenia Gravis?
- 2:00 p.m.-3:00 p.m. Introduction to Hematology and Biochemistry in Sea Turtles and Sharks
- 3:30 p.m.-4:30 p.m. Basic Alpaca Husbandry and Camelidae Hematology
- 1:30 p.m.-5:00 p.m. **Clinical Pathology Scientific Session I**  
Invited Presentation  
Urinary Exosomes
- 1:30 p.m.-5:00 p.m. **Experimental Disease Specialty Group Session I**  
Invited Presentations  
B Cells Gone Wild: SLE Models Reveal a Complex Pathogenesis and Promising New Therapies  
Matters of Life and Death: The Role of Mitochondria in Apoptosis and Related Phenomena  
  
*Sponsored by Amgen, Inc.*
- 1:30 p.m.-5:00 p.m. **Natural Disease Specialty Group Session II**  
Invited Presentations  
The Expanding Role of Morbillivirus Infections in Wildlife Disease  
Bluetongue: New Wrinkles on an Old Theme  
  
*Sponsored by Huntingdon Life Sciences*
- 1:30 p.m.-5:00 p.m. **Toxicologic Pathology Specialty Group Session I**  
Invited Presentations  
Emerging and Re-Emerging Infectious Diseases of Primates  
Insidious Infections of Laboratory Rodents Still Affect Research:  
Detection, Prevalence and Impact  
  
*Sponsored by Amgen, Inc.*
- 6:00 p.m.-7:30 p.m. **ACVP Town Meeting**

7:30 p.m.-10:00 p.m. **Mystery Slide Review and Neuropathology Case Presentations**

*Sponsored by Charles River Laboratory Pathology Associates and Schering-Plough Biopharma*

7:30 p.m.-9:30 p.m. **ACVP Resident Training Committee Meeting**

### ***Monday, November 17, 2008***

7:30 a.m. Registration Open

8:00 a.m.-5:00 p.m. Career Center Open  
*Sponsored by Covance Laboratories*

8:00 a.m.-5:00 p.m. Student and Guest Hospitality Area  
*Sponsored by Merck Research Laboratories*

8:00 a.m.-12:00 noon **ACVP and ASVCP Joint Plenary Session**  
Evolution of Disease

8:00 a.m.-8:10 a.m. Introduction

8:10 a.m.-8:50 a.m. Plagues and Politics: Disease as the Etiology for Human History

8:50 a.m.-9:30 a.m. Virus Evolution and Emerging Disease

9:30 a.m.-10:10 a.m. Pathogenesis of Emerging Diseases in Their New Hosts

10:40 a.m.-11:20 a.m. Climatic Effects on Arbovirus Disease Occurrence

11:20 a.m.-12:00 noon Ecologic and Multidisciplinary Approaches to the Study of Disease  
Evolution and Emergence

*Sponsored by Charles River Laboratories Preclinical Services and SNBL USA, Ltd.*

8:00 a.m.-12:00 noon **ASVCP Veterinary Laboratory Professionals Session II**

8:00 a.m.-9:00 a.m. The Mechanism of Acetaminophen-Induced Toxicity in Dogs and Cats

9:00 a.m.-10:00 a.m. Introduction to Blood Sample Collection and Interpretation in Cetaceans

11:00 a.m.-12:00 noon The Hemoplasmas of the Cat: Three Species and Counting

9:30 a.m.-1:00 p.m. Exhibits Open  
Specialty Group and Veterinary Student Poster Presentations  
Silent Auction

12:15 p.m.-1:15 p.m. **ACVP Clinical Pathology Examination Slide Review**

12:30 p.m.-6:00 p.m. **Optional Tours**  
--Historic San Antonio  
--Behind the Scenes at SeaWorld  
--Golf at Pecan Valley

- 1:30 p.m.-5:00 p.m. **Free Afternoon**
- 5:15 p.m.-6:45 p.m. **ASVCP Reception** (Open to all members)
- 7:00 p.m.-9:00 p.m. **Mystery Slide Review: Male Reproductive Pathology**
- 7:00 p.m.-9:00 p.m. **ASVCP Clinical Chemistry Review Session**  
*Sponsored by IDEXX Medical Affairs*

### ***Tuesday, November 18, 2008***

- 8:00 a.m. Registration Open
- 8:00 a.m.-5:00 p.m. Career Center Open  
*Sponsored by Covance Laboratories*
- 8:00 a.m.-5:00 p.m. Student and Guest Hospitality Area  
*Sponsored by Merck Research Laboratories*
- 8:00 a.m.-12:00 noon **ASVCP Veterinary Laboratory Professionals Session III**
- 8:00 a.m.-10:00 a.m. Instrument Operation, Quality Control and Six Sigma Quality
- 11:00 a.m.-12:00 noon Veterinary Laboratory Professionals Roundtable Discussion  
  - Issues of After Hours Laboratory Services in Veterinary Colleges
  - Callback versus Stat Laboratory: Advantages and Disadvantages
  - Quality Control Issues with After Hour Laboratory Services
  - Instrumentation and Tests Offered
- 8:00 a.m.-12:00 noon **Clinical Pathology Scientific Session II**  
  
 Invited Speaker  
 Biomarkers of Disease and Aquaporins in Health and Disease
- 8:00 a.m.-12:00 noon **Concurrent Session I: Transplantation Pathology**
- 8:00 a.m.-8:50 a.m. Feline Renal Transplantation
- 8:50 a.m.-9:40 a.m. Gene Therapy of Lysosomal Storage Diseases in Dogs and Cats
- 10:10 a.m.-11:00 a.m. Canine Model of Hematopoietic Cell Transplantation: Lessons in Applied Hematology and Immunology
- 11:00 a.m.-11:50 a.m. Towards Clinical Xeno-Islet Transplantation: Experience in the Pig-to-Primate Model and Pig Production
- 11:50 a.m.-12:00 noon Questions and Discussion  
  
*Sponsored by Genentech, Inc.*
- 8:00 a.m.-12:00 noon **Concurrent Session II: Genetic Infectious Disease Resistance in Animals**

- 8:00 a.m.-8:05 a.m. Introduction
- 8:05 a.m.-8:55 a.m. Taking Infectious Disease Genomics to a New Level with Next Generation DNA Sequencing
- 8:55 a.m.-9:25 a.m. The Role of Prion Protein Membrane Anchoring in Pathogenesis of Prion Diseases
- 9:25 a.m.-9:55 a.m. Immune Pathways and Candidate Genes Involved in Regulating Responses to Porcine Reproductive and Respiratory Syndrome (PRRS)
- 10:25 a.m.-10:55 a.m. Genetic Analysis of Resistance to Gastrointestinal Nematodes
- 10:55 a.m.-11:25 a.m. Genetics of Johne's Disease
- 11:25 a.m.-12:00 noon Genetic Resistance to Brucellosis
- 8:00 a.m.-12:00 noon **Education Specialty Group Session**  
Invited Presentation  
Engaging Students in Veterinary Pathology: A First Step to Recruiting New Veterinary Pathologists
- 8:30 a.m.-3:00 p.m. **Very Important Pathologist Program** (available at an additional fee)
- 9:30 a.m.-1:00 p.m. Exhibits Open  
Specialty Group and Veterinary Student Poster Presentations  
Silent Auction
- 12:15 p.m.-1:15 p.m. **ACVP Gross and Microscopic Examination Slide Review**
- 1:30 p.m.-5:00 p.m. **ASVCP Case Review Session**
- 1:30 p.m.-5:00 p.m. **Diagnostic Pathology Specialty Group Session**  
*Sponsored by Antech Diagnostics*
- 1:30 p.m.-5:00 p.m. **Experimental Disease Specialty Group Session II**  
Invited Presentations  
Animal Models of Cervical Cancer  
Evasion of Innate Host Defense by Bacterial Pathogens  
  
*Sponsored by Genentech, Inc.*
- 1:30 p.m.-5:00 p.m. **Toxicologic Pathology Specialty Group Session II**  
Invited Presentations  
INHAND (International Harmonization of Nomenclature and Diagnostic Criteria for Lesions in Rats and Mice) and the GESG (Global Editorial Steering Committee)  
STP Guidelines and Recommendations for the Evaluation of the Bone Marrow in Toxicologic Studies  
  
*Sponsored by Amgen, Inc.*
- 5:15 p.m.-6:30 p.m. ACVP Business Meeting
- 7:00 p.m.-9:00 p.m. Presidential Reception and Live Auction  
*Sponsored by Pfizer, Inc.*

***Wednesday, November 19, 2008***

- 8:00 a.m. Registration Open
- 8:00 a.m.-12:00 noon Young Investigator Award (Recipients) Poster Presentations
- 8:00 a.m.-12:00 noon **Concurrent Session III: Muscle Pathology**
- 8:00 a.m.-8:20 a.m. Introduction and Methods of Examination
- 8:20 a.m.-9:10 a.m. What's New in Inflammatory Myopathy and Muscular Dystrophies
- 9:10 a.m.-10:00 a.m. Mitochondrial and Other Metabolic Myopathies
- 10:30 a.m.-11:20 a.m. Pathogenesis of Statin Myopathy
- 11:20 a.m.-11:50 a.m. Skeletal Muscle Neoplasia
- 11:50 a.m.-12:00 noon Final Questions and Discussion
- 8:00 a.m.-12:00 noon **Concurrent Session IV: Homeland Security and Veterinary Pathology: On the Front Lines of Protection**
- 8:00 a.m.-9:00 a.m. We Have to Think the Unthinkable: The Effects of 9-11-2001
- 9:00 a.m.-9:50 a.m. Rodent Models of Inhaled Hazardous Infectious and Toxicologic Agents
- 10:20 a.m.-11:10 a.m. Pathology of Biological Select Agents: Safety, Security and Science
- 11:10 a.m.-12:00 noon Field Diagnostic Assays and Experience with Biologic and Toxicologic Agents
- 8:00 a.m.-12:00 noon Mini-Symposium: Pathologists in Discovery Toxicology: An Emerging Discipline
- 8:00 a.m.-8:20 a.m. Discovery Toxicology: Introduction and Overview of the Program
- 8:20 a.m.-9:00 a.m. On- or Off-Target-Based Toxicity
- 9:00 a.m.-9:45 a.m. In vitro Safety Pharmacology: A Guide for Pathologists
- 10:15 a.m.-11:00 a.m. Innovative Strategies for Predictive Teratogenicity
- 11:00 a.m.-11:40 a.m. Cardiovascular Safety Assessment: An Integrative Approach
- 11:40 a.m.-12:00 noon Panel Discussion
- 12:00 noon **Conference Ends**
- 1:00 p.m.-5:00 p.m. **Post-Meeting Workshop I (available at an additional fee)**  
Morphologic Evaluation of the Testis in Laboratory Animal Species
- 1:00 p.m.-1:10 p.m. Brief Review of STP Position Paper, Workshop Objectives, and Outline of the Agenda

- 1:10 p.m.-2:10 p.m. Practical Stage-Aware Evaluation of the Testis by Pathologists
- 2:10 p.m.-2:50 p.m. Standardized Diagnostic Terminology for Testicular Lesions
- 3:10 p.m.-4:00 p.m. Confounding Issues of Immature and Peripubertal Testes
- 4:00 p.m.-4:30 p.m. Potential Pitfalls Evaluating Rat Testis in Subacute Toxicity Studies
- 4:30 p.m.-5:00 p.m. Questions and Discussion
- 1:00 p.m.-5:00 p.m. **Post-Meeting Workshop II (available at an additional fee)**  
A Contemporary Approach to Renal Biopsy Pathology in Veterinary Medicine
- 1:00 p.m.-1:30 p.m. Introduction to Current Concepts of Renal Biopsy Application in Clinical Veterinary Medicine
- 1:30 p.m.-2:00 p.m. Approach to Renal Biopsy Interpretation
- 2:00 p.m.-2:30 p.m. Pathology of Glomeruli in Primary and Secondary Glomerular Disease
- 2:30 p.m.-3:00 p.m. Pathology of Tubulointerstitial Disease
- 3:30 p.m.-4:00 p.m. Ultrastructure of Renal Disease
- 4:00 p.m.-4:30 p.m. Clinical Correlates of Renal Disease
- 4:30 p.m.-5:30 p.m. Renal Biopsy Case Presentation: A Clinician-Pathologist Partnership
- 1:30 p.m.-5:00 p.m. **Post-Meeting Workshop III (available at an additional fee)**  
Morphometrics and Analytical Applications in Digital Microscopy

## 2008 ASVCP Pre-meeting Workshop

The ASVCP Pre-meeting Workshop, "Biomarkers: A Reality Check" will be held on Saturday, November 11, 2007. Drs Laura Boone and Daniela Enulat will chair this workshop, which has broad applicability to professionals in industry, academia and diagnostic medicine. A listing of the speakers and the specific topics is provided below. Please consider signing up for this interesting and very useful workshop!!!

8:00 a.m.-5:00 p.m.

Room 001A, Convention Center

### **ASVCP Pre-Meeting Workshop**

#### **Biomarkers: A Reality Check**

Session Co-Chairs: Laura I. Boone, DVM, PhD, Daniela Enulat, DVM, PhD  
Research Advisor, Pathology, Eli Lilly and Company, Greenfield, IN

Daniela Enulat, DVM, PhD

Director of Clinical Pathology, GlaxoSmithKline, King of Prussia, PA

8:00 a.m.-9:00 a.m.

Qualification of Biomarkers

Laura I. Boone, DVM, PhD

9:00 a.m.-10:00 a.m.

Biological Considerations in the Application of Biomarkers in Preclinical Studies

Daniela Ennulat, DVM, PhD

10:00 a.m.-10:30 a.m.

Refreshment Break

10:30 a.m.-11:30 a.m.

Cardiac Biomarkers

Philip F. Solter, DVM, PhD

Associate Professor, Department of Pathobiology, University of Illinois, Urbana-Champaign, Urbana, IL

11:30 a.m.-12:30 p.m.

Lunch (on your own)

12:30 p.m.-1:30 p.m.

Bone Biomarkers in Preclinical Research: A Ten Year Experience

Aurore Varela, DVM, MSc

Senior Research Scientist, Charles River Laboratories, Senneville, Quebec

1:30 p.m.-2:30 p.m.

Endocrine Biomarkers: Pulses, Surges & Circadian Rhythms

Ilene R. Cohen, PhD

Head, Investigative Toxicology, Lilly Research Laboratories, Eli Lilly and Company, Greenfield, IN

2:30 p.m.-3:00 p.m.

Refreshment Break

3:00 p.m.-4:00 p.m.

Renal Biomarkers

Daniela Ennulat, DVM, PhD

4:30 p.m.-5:00 p.m.

Closing Remarks and Discussion

## ASVCP Committee Updates

### Membership and Outreach Committee Update

Your membership and outreach committee has been active and creative in outreach activities to promote the ASVCP and encourage membership. I would like to thank all our members for their ongoing hard work and inventive solutions.

ASVCP Booth: For the first time, the committee would like to request your participation with staffing the Exhibitor Hall ASVCP booth at the annual meeting in San Antonio, Texas. If you will be attending the conference, we are requesting

that you thoughtfully consider contributing one hour of your time distributing promotional items and answering questions regarding your professional organization. Please join in this collaborative effort by contacting me ([krimerp@uga.edu](mailto:krimerp@uga.edu)) to schedule an hour of support for the ASVCP.

**Poster Contest:** The committee is pleased to announce a **\$250 ASVCP Poster Contest**. The goal of the poster is to showcase the ASVCP, promote interest in veterinary clinical pathology, and encourage membership in the ASVCP. The poster, intended for wide distribution and display (hallways, offices, billboards, at meetings), should have interesting visual appeal while providing useful information. The only requirements for this 14x17 inch color poster are inclusion of the ASVCP logo and web address ([www.asvcp.org](http://www.asvcp.org)) -- the rest is open to the creativity of the submitters. Additional information about the ASVCP and Membership Benefits that could appear on the poster can be found on the website link "How to Join" and in our brochure (also available online). The winning entry, selected by the Membership Outreach Committee and Executive Board, will be printed and distributed to Veterinary Colleges, Pathology Clubs, anyone requesting a poster, and will be displayed at meetings. The new ASVCP poster also will appear along with a brief profile about the winning submitter(s), in our journal *Veterinary Clinical Pathology* prior to printing and general distribution. Students, residents, graduate students, and faculty are all encouraged to submit a poster as individuals or teams/groups (e.g. Pathology Club). The deadline for submissions is December 1, 2008.

Please submit the poster as a TIFF or PowerPoint file on a CDROM to:  
Dr. Paula Krimer  
AVDL, CVM  
University of Georgia  
Athens, GA 30602

**Heska Hematology Atlases:** A popular success last year was the distribution of over 3500 one-page reference hematology atlases created by our own member Glade Weiser and sponsored by Heska. Heska has agreed to indefinitely fund the annual distribution of sophomore class sets to North American veterinary colleges. Each veterinary school should receive the atlases, along with a letter about the ASVCP, by September for distribution to students in sophomore veterinary clinical pathology courses. Contact The Rees Group ([srees@reesgroupinc.com](mailto:srees@reesgroupinc.com)) to indicate the current number of sophomore students at your college to ensure sufficient atlases for your course.

**SAVMA:** As initiated last year, our booth and membership brochures were sent to the 2008 SAVMA annual meeting in Auburn-Tuskegee and we will aim to continue to do so in future years. The 2009 SAVMA Symposium will be held March 26-29 at The Ohio State University. We plan to contact the local pathology club to recruit their participation in setting up the booth and invite all veterinary clinical pathology faculty involved in the 2009 conference to actively promote our

society and specialty to veterinary students. If you are speaking at the meeting, please contact us so that we can provide you with promotional items.

Wiley-Blackwell and Brochure: With the change to Wiley-Blackwell as publisher, we will take advantage of new opportunities for showcasing our society. In consultation with Wiley representatives, the committee has selected five professional groups to target for increased interactions and future membership at their annual meetings. These groups are the American College of Veterinary Internal Medicine, European College of Veterinary Internal Medicine, American Association of Laboratory Animal Scientists, Veterinary Cancer Society, and North American Veterinary Conference. Wiley will actively promote our society at the annual meetings for these organizations. Part of this promotion will include a new color tri-fold brochure that the committee is designing with our Wiley liaison. An announcement will be made to the membership when the new brochure is finished and available for distribution.

ASVCP Promotion: We would like to remind you to promote clinical pathology and membership in the ASVCP by taking advantage of your speaking engagements. Just download "What is a Clinical Pathologist" from our homepage. This powerpoint presentation is ideal for presenting to veterinary students and non-veterinary groups. A suggested script also is available by contacting me ([krimerp@uga.edu](mailto:krimerp@uga.edu)). In addition, a brief two-slide PowerPoint presentation to add to your seminars/presentations for promoting ASVCP membership to other colleagues, such as at continuing education lectures also is available on our home page. Don't forget that our Jeopardy-style Clinical Pathology game is available for seminars; please contact the committee to obtain a copy for your Pathology Club meeting!

New Committee Chair: After the maximum allowable term of five years, I will be stepping down as Chair of the Membership Outreach Committee at the end of this year. I am pleased to announce that Cheryl Swenson will be our new Chair as, effective January 2009. Cheryl has been a creative, reliable and thoughtful member of this committee and I look forward to her leadership and further contributions in her new role. Please join me in welcoming her as our new Chair in the New Year!

Respectfully submitted,  
Paula Krimer

**The Quality Assurance and Standards Committee update**

The QAS Committee has had two teleconference meetings, and we wanted to update you on some upcoming events and happenings.

**QA Guidelines**

The Quality Assurance and Standards (QA&S) committee develops and maintains quality control guidelines for performance of laboratory testing of veterinary specimens. These Guidelines were developed "to encourage and promote the establishment of standards for the performance of laboratory procedures" on veterinary samples. Guidelines for clinical chemistry, cytology, hematology and coagulation, and radioimmunoassay are posted on the ASVCP website under at <http://www.asvcp.org/publications/qas-guidelinemenu.html>. These Guidelines are currently undergoing a revision to reduce redundancy and to update recommendations for method validation. The new format will have a General section applicable to all testing within the laboratory with subsections for recommendations unique to specific types of testing. QC Guidelines for exotic manual hematology, urinalysis and cross-matching will be added to the new edition. The QA&S envisions enhancements to the on-line format of the Guidelines, such as addition of a search function, internal and external links, and down-load options. **The QA&S committee is actively searching for members willing to assist in the development and editing of the Guidelines.** Please contact either Dr. Kendal Harr [drharr@gmail.com](mailto:drharr@gmail.com) or Dr. Kristen Friedrichs [friedrik@svm.vetmed.wisc.edu](mailto:friedrik@svm.vetmed.wisc.edu) if you are interested. Future topics include blood typing, fecal float analysis, special cytologic stains, and immunocytochemistry. In addition, we have 3 ASVCP members that are translating the Guidelines into Spanish, French and German.

**Reference Intervals**

The QA&S committee was invited to present the ASVCP's perspective on reference intervals at the ESVCP-ISACP joint meeting in Barcelona in September, 2008. The ASVCP currently promotes the International Federation of Clinical Chemistry's recommendations. The QA&S committee members and others, however, believe there is a need for more veterinary-specific guidelines for the development and reporting of reference value studies. A subcommittee of the QA&S, the Reference Interval Team (RIT) has been formed to address this topic and to develop a draft document on the ASVCP's recommendations concerning reference intervals. It is the hope of the committee that the final version of the document will serve as a guide to individuals performing and publishing reference interval studies. Members of RIT include Kristen Friedrichs (RIT chair and QA&S co-chair), Kendal Harr (QA&S co-chair), Kirstin Barnhart (QA&S EB liaison), Julia Blanco, and Balazs Szladovits. **If you have an interest in the development of reference interval recommendations and wish to participate in this project, please contact Kristen Friedrichs, [friedrik@svm.vetmed.wisc.edu](mailto:friedrik@svm.vetmed.wisc.edu).**

The following abstract has been submitted by Kristen Friedrichs to the ESVCP-ISACP meeting in Barcelona:

The need for reference values to interpret clinical pathologic data is indisputable. However, the optimal method for derivation of reference values is frequently debated. A uniform approach to the development and reporting of reference values would benefit many veterinary professionals including clinical pathologists, study investigators, clinicians and assay developers. The standard for production of human reference values was commissioned by the International Federation of Clinical Chemistry (IFCC) in 1970. The Expert Panel on the Theory of Reference Values (EPTRV) authored a 6-part series on the production of reference values, which was adopted by several professional organizations including the Clinical and Laboratory Standards Institute (CLSI). Subsequent to these publications, alternative statistical methods used to identify outliers, analyze the reference values, and determine the need for partitioning have been proposed. The ASVCP currently recommends the IFCC guidelines, but concerns have been expressed regarding their complexity and expense. In addition, they fail to provide precise recommendations for the handling of small sample sizes frequently encountered in veterinary medicine. Accordingly, a subcommittee of the ASVCP Quality Assurance and Standards committee was formed to develop veterinary-specific guidelines for the performance of reference interval studies. The goal of this subcommittee is to develop practical and rational recommendations that are statistically and clinically valid. Guidelines that are excessively complicated or inaccessible will fail to create the desired consistency and standardization. This presentation will provide an update on the subcommittee's efforts. The goal is to present a draft document on recommendations for the development of reference values to the ASVCP membership and to provide an opportunity for comments and revisions. Ultimately the final version of the guidelines will be distributed to the membership for evaluation and endorsement.

### **QC Survey for Practitioners**

The QC Survey was completed on VIN by over 400 participating veterinary clinics and referral institutions. Data is currently being tallied and will be presented to the QAS committee in San Antonio. Presentation to the ASVCP as a whole is planned for the following year. Thanks to all who participated and made this a success!

### **VIN Rounds**

Drs. Jen Brazzell and Kendal Harr successfully taught an outreach rounds to practitioners with approximately 20 people attending live on September 7, 2008. Rounds are expected to reach about 1000 individuals who view them over the course of the month. The archive will exist forever and can be search through VIN. The focus was on the two most popular chemistry instruments determined by the VIN QC survey, the Idexx VetTest and the Abaxis VetScan. This one hour

rounds was geared to give a brief background and definition of terms and then focused to enable practitioners to do QC on these two instruments.

**VIN Distance Learning Course for Quality Management – Kathy Freeman**

Part I is running from June to September. With a minimum of 9-12 planned, there are currently 15 who are taking this. The class was overfilled. Congratulations Kathy!

Currently, the ESVCP is considering this as a recommendation and/or requirement for resident training to supplement quality control education.

The course, "Quality Management for the Veterinary Clinical Pathology Laboratory," is designed to provide an introduction to and practical application of quality management in the veterinary clinical pathology laboratory. It is given in one 14-week and one 12-week part (Part I and Part II). Part I is a prerequisite for Part II.

In Part I, participants will be introduced to theories of management and concepts vital to quality planning. Examples of ISO-based and GLP standards will be included. Laboratory design, Westgard Rules, QC Validation and Sigma Metrics will be covered.

In Part II, participants will study personnel specifications, job descriptions, training records and employee appraisals, learn about audits in the veterinary clinical pathology laboratory and determination of reference intervals. Improvement Opportunities, external Quality Assurance performance and a Quality Plan for the laboratory are the final topics in Part II.

There will be real-time sessions every other week. The majority of the work will be done by e-mail of drafts and revisions to the instructors, with the final products of some sections shared with the rest of the participants by posting on the course message boards. The review and participant questions will also be shared on the course message boards. In order to demonstrate satisfactory participation in this course, participants are expected to attend all of the real-time sessions, hand in completed homework assignments and to work with the instructor(s) in revising assigned items until both the instructor(s) and participant are satisfied with the results, as well as pass the examination with a score of at least 60%.

**Laboratory Professional's Committee**

The QAS committee would also like to support the Veterinary Laboratory Professional's Committee in their initiative of QC training in San Antonio.

Please mark your calendars for:

**Instrument Operation, Quality Control and Six Sigma**

Tuesday November 18th from 8:00 - 10:00.

Dr. White's presentation in Savannah was so well received that he was invited back Texas to speak on QC again. I urge anyone involved in laboratory quality control to attend this lecture.

#### **VLP Round Table Discussion**

#### **QC/ QA Issues With After Hours Laboratory Services In Veterinary Colleges**

11:00 - 12:00 Nov 18<sup>th</sup>, San Antonio.

## **Executive Board News**

Fall semester is in full swing and our annual meeting is just around the corner. It should be another strong meeting, and we hope that you are planning on attending. Just a few highlights to note include the ASVCP Pre-Meeting Workshop, "Biomarkers, A Reality Check," and our popular Teaching Clinical Pathology Session, "**Clinical Pathology and Toxicology: Academic and Industry Perspectives.**" Browse the schedule to see other stimulating topics that will be covered at the meeting.

In addition to the Executive Board and Annual Business Meeting sessions held at the Annual Meeting of the ASVCP, the members of the ASVCP Executive Board correspond regularly during the year via electronic mail and telephone conferences to accomplish the Society's business. Two recent issues that have been discussed include the on going Strategic Plan, which is coming along and the creation of a new position for a Web-site Manager. Please see the advertisement for this position. As part of our Strategic Plan, it became apparent that the web-based and technology needs for the organization must be enhanced and that a dedicated position would provide the best quality and continuity.

Also in this issue, is a call for publications for *Veterinary Clinical Pathology*. Please see the announcement. Lastly, throughout the year, committee updates and activities are summarized in this issue as well as past issues. Many of our committees are very active and are accomplishing quite a lot. Committee work is one way to become more active in the Society and our committees are always looking for people to join. If you have an interest in serving on one of our 7 committees, please do so. See you in San Antonio!!!

## Congratulations to One of Our Own

### 2008 Outstanding Woman Veterinarian of the Year



Dr. Melinda Wilkerson

The Association for Women Veterinarians Foundation is pleased to announce the name of our 2008 Outstanding Woman Veterinarian of the Year, Dr. Melinda J. Wilkerson. The OWVY is awarded to a female graduate of an accredited veterinary school. Its purpose is to recognize special effort and achievement by a woman veterinarian in any area of veterinary medicine.

Dr. Wilkerson received her DVM and MS from the College of Veterinary Medicine at the University of Missouri, and then completed her PhD degree in Veterinary Science as well as a residency in Veterinary Pathology at Washington State University's College of Veterinary Medicine. She is double boarded in Anatomical Pathology and Clinical Pathology. Dr. Wilkerson currently is the Director of the premier Clinical Immunology/ Flow Cytometry Laboratory in the Midwest, an Associate Professor of Immunology, and Interim Dean of Academic Programs, all at the College of Veterinary Medicine, Kansas State University. She is also conducting research on host – parasite interaction involving both infectious and non- infectious agents, as well as developing innovative assays using flow cytometry, including evaluating cellular immunity in many different species.



Dr. Ralph Richardson, Dean at Kansas State's CVM, states "She has taken a leadership stance that is forward-thinking, insightful, and in tune with a new generation of veterinary students. I have been amazed how she has worked with students, information technology support personnel, faculty and staff to implement the most radical changes that our curriculum and learning tools have experienced in at least the past 10 years." Dr. Lisa Freeman further states, "Dr. Wilkerson has led the initiative to make our veterinary curriculum paperless. She has overseen the process of training faculty and incoming students to rely on Tablet PC's rather than reams of paper. Dr. Melinda Wilkerson is known in our college and across the K-State campus as a caring and creative individual dedicated to teaching, research and service."

Dr. Stephen Hines at Washington State relates "Mindy is fearlessly leading KSU into new areas as she modernizes the curriculum, seeks to address long standing problems, facilitates the creative use of new technology, and investigates how best to assess learning outcomes. She is doing all this while maintaining her teaching, research, and service roles, and as she attends to the many local and national responsibilities of the Associate Dean. It is nothing short of astounding."

In closing, Dr. Steven Stockham of Kansas State states, “Four of our last five clinical pathology residents have been women. Each of them sees Dr. Wilkerson as a role model; not only for her professional accomplishments but also for her professional ethics and activities. When Dr. Wilkerson speaks, they listen; when Dr. Wilkerson works, they observe; when Dr. Wilkerson accomplishes a task, they admire.”

We proudly present Dr. Melinda Wilkerson as our 2008 Outstanding Woman Veterinarian.

## Veterinary Clinical Pathology Journal Update

*Veterinary Clinical Pathology*

**Frequency:**  
Quarterly

**Editors-in-Chief:**  
Mary M. Christopher  
Karen M. Young

**Impact Factor:**  
0.671

GO

Submit an article

# Veterinary Clinical Pathology

An International Journal of Laboratory Medicine

## Submit your paper to *Veterinary Clinical Pathology* today!

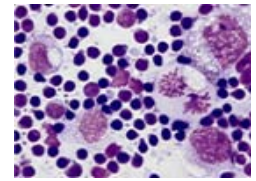
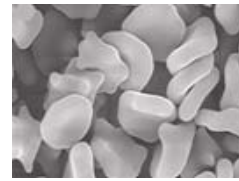
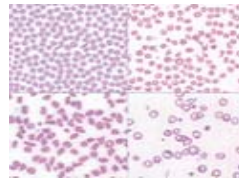
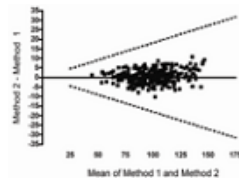
***Veterinary Clinical Pathology*** is a leading international journal that publishes high quality research and clinical investigations in all areas of comparative laboratory medicine:

- Biomarkers
- Clinical chemistry
- Coagulation and hemostasis
- Cytopathology
- Education in clinical pathology
- Endocrinology
- Hematopathology
- Laboratory management
- Blood-banking and transfusion medicine
- Experimental/investigative clinical pathology
- Molecular diagnostics
- Pathophysiology
- Quality assurance
- Toxicologic clinical pathology

Five compelling reasons to submit your manuscript to *Veterinary Clinical Pathology*:

- **RAPID** time to online publication with Early View — the journal boasts a short turnaround time from acceptance to publication.
- **NEW** online article tracking via Blackwell's Author Services enables authors to track their article through the production process to publication online and in print — visit <http://www.blackwellpublishing.com/bauthor> to learn more!
- **CONVENIENT** web-based manuscript submission system adds ease and efficiency to the review process.
- **INDEXING** in MEDLINE/PubMed.
- **FREE** color images (in print and online), no submission fees or page charges,

and free author PDF and discounted reprints.



### Submit Your Manuscript: Easier than ever!

If you have a paper that you would like to have considered for the journal, simply visit <http://mc.manuscriptcentral.com/vcp> today!

To view Author Guidelines or access free fully-browsable contents, go to <http://www.blackwellpublishing.com/vcp>.

This message was sent to [#EmailAddr#]. If you would rather not receive future messages from us, unsubscribe at any time by [clicking here](#). You may also review our Privacy Policy at [www.wiley.com/privacy](http://www.wiley.com/privacy).

Visit our [Help](#) page to find information on ordering, shipping/returns, your account, journal subscriptions, mailing lists and RSS feeds. You may also visit our [Contact Us](#) page to find a contact for additional assistance with a related product or service.

**Wiley InterScience** is a division of:  
John Wiley & Sons, Inc. | 111 River Street | Hoboken, NJ 07030  
Phone: 800-225-5945 | Fax: 800-605-2665 | [www.wiley.com](http://www.wiley.com)

Copyright © All rights reserved.

## General Information

**ASVCP NATIONAL OFFICE:** Members can contact the ASVCP National Office at 2810 Crossroads Drive, Suite 3800, Madison, WI 53718; Phone 608-443-2479; Fax 608-443-2474 or 608-443-2478; E-mail: [info@asvcp.org](mailto:info@asvcp.org).

**Electronic Newsletters:** Members who have provided the Society with an e-mail address will receive an e-mail containing a link to the newsletter as soon as each issue is posted to the ASVCP website. The newsletters are posted in PDF format. If you have any problems accessing the newsletter electronically, please contact the ASVCP National Office ([info@asvcp.org](mailto:info@asvcp.org)) or Secretary Karen Russell, [krussell@cvm.tamu.edu](mailto:krussell@cvm.tamu.edu). Members that do not have an e-mail access will receive paper copies.

**Change of Address:** Please send any changes in mailing address or electronic mail address to the ASVCP National Office at 2810 Crossroads Drive, Suite 3800, Madison, WI 53718; Email: [info@asvcp.org](mailto:info@asvcp.org); FAX 608-443-2474 or 608-443-2478.

**ASVCP Newsletter and/ or Website Submissions:** If you have material of interest to post in the newsletter or on the ASVCP website ([www.asvcp.org](http://www.asvcp.org)), please contact the ASVCP Secretary, Karen Russell, Dept of Veterinary Pathobiology, Mail Stop 4467, College of Veterinary Medicine and Biomedical Sciences, Texas A&M University, College Station, TX 77843-4467;

krussell@cvm.tamu.edu, or contact the ASVCP National Office at 2810 Crossroads Drive, Suite 3800, Madison, WI 53718; info@asvcp.org.

**ASVCP Membership Application:** Member application forms are available at the ASVCP website ([www.asvcp.org](http://www.asvcp.org)), by contacting ASVCP Secretary Karen Russell at [krussell@cvm.tamu.edu](mailto:krussell@cvm.tamu.edu), or by contacting the ASVCP National office at 2810 Crossroads Drive, Suite 3800, Madison, WI 53718; phone 608-443-2479; Email: [info@asvcp.org](mailto:info@asvcp.org).

**2008 ASVCP Membership Directory mailed:** Hard copies of the 2008 Membership Directory have been mailed to all members. If you have not received your copy (members outside North America can expect the longer times until receipt), please contact the National Office (see contact information above), or the Secretary ([krussell@cvm.tamu.edu](mailto:krussell@cvm.tamu.edu)).

## Upcoming Meetings

**American Association of Veterinary Laboratory Diagnosticians will hold the AAVLD/USAHA 51st Annual Meeting:** October 23-29, 2008, Greensboro, NC. Information can be viewed at [www.aavld.org](http://www.aavld.org).

**2009 ACVIM Forum with the Canadian Veterinary Medical Association,** June 3-6, 2009, Montreal, Canada. For more information, go to [www.acvim.org](http://www.acvim.org).

**146<sup>th</sup> AVMA Annual Convention.** July 11-14, 2009, Seattle, Washington. For more information, go to [www.avmaconvention.org](http://www.avmaconvention.org).

## Job Opportunities

### Residency in Clinical Pathology Texas A&M University

The Department of Veterinary Pathobiology at Texas A&M University's College of Veterinary Medicine and Biomedical Sciences invites applicants for a residency training position in clinical pathology beginning on July 1, 2009. The goal of the program is to produce well-trained and well-rounded clinical pathologists that are prepared to make important contributions to the improvement of animal and human health in industry, academia, and government. The three-year program fulfills the eligibility requirements for the American College of Veterinary Pathology (ACVP) certification examination, and the program has a strong record of residents becoming ACVP diplomates.

The new resident will be mentored by three board-certified clinical pathologists and three clinical pathology residents. The residency program emphasizes preparation for board certification in clinical pathology by providing experience in diagnostic service, instruction of veterinary students, participation in diagnostic and research-oriented seminars, and graduate course work.

Training in pathology is based on case material from the Veterinary Medical Teaching Hospital and supplemented with a variety of weekly seminars. Candidates are strongly encouraged to complete a PhD degree and may be eligible for continued salary support following the residency. The department has a large faculty with diverse

backgrounds and research interests, which provides a stimulating environment and many exciting opportunities for research training. Research strengths within the department include hemostasis, host/pathogen interactions, immunology, molecular genetics, neuroscience, avian pathology, parasitology, virology, comparative pathology, and bacteriology. Interdepartmental research opportunities are also available and signature programs within the college include environmental medicine/toxicology, neurosciences, biodefense and emerging infectious diseases, cardiovascular sciences, reproductive biology, and biomedical genomics. Research training opportunities are also available in the Texas A&M School of Medicine. The facilities include a state-of-the-art necropsy and teaching building with office space for residents and faculty. The Bryan-College Station area offers a diverse college-town atmosphere, a relatively low cost of living, and convenient access to regional urban centers.

Applicants must possess a DVM or equivalent degree from an AVMA-accredited school, and provide evidence of academic strength and interest in pathology.

The starting salary is currently \$31,000 per year with medical and retirement benefits. Applicants must have a D.V.M. or equivalent degree.

Review of applications will begin December 2008 and continue until the position is filled. Interested individuals should submit a resume, college transcripts, GRE score, contact information for three references, and a statement of professional goals and interests via e-mail to [cvoelker@cvm.tamu.edu](mailto:cvoelker@cvm.tamu.edu) or send by mail to: Ms. Cindy Voelker, Business Coordinator, for the attention of Dr. Karen E. Russell, Department of Veterinary Pathobiology, Texas A&M University, College Station, Texas 77843-4467. For more information, phone 979-845-4655. Additional department information is available at [www.cvm.tamu.edu/vtpb](http://www.cvm.tamu.edu/vtpb).

Texas A&M University is an Equal Opportunity Educator and Employer committed to excellence through diversity.

**Orders for 2008 ASVCP Case Review Sets**

The 2008 ASVCP Case Review Sets will be sold on the same priority basis as in previous years. Twenty (20) sets are reserved for **purchase** by the presenters of the 2008 cases (NOTE: slide sets are not provided gratis for the presenters). Additional "Institutional Sets" are reserved for purchase by schools or colleges of veterinary medicine that grant a DVM or equivalent degree (NOTE: Institutional Sets must be purchased by an ASVCP member at the institution). To be eligible for either a Presenter Set or an Institutional Set, the order form with payment must be **RECEIVED BY** the ASVCP Office **no later than October 15, 2008**. After October 1, all remaining slide sets will be sold to ASVCP members in sequential order starting with the earliest postmark dates on the applications. Payments for orders not filled will be refunded. The application form and payment should be sent to the Treasurer at the address on the order form below.

**2008 ASVCP Case Review Set Order Form**

Please enclose a check or money order (United States dollars only) payable to ASVCP for \$75 for each set to be mailed within North America, or \$100 for those mailed to other locations.

**Institutional Set** (One set per school or college)

Name of Institution \_\_\_\_\_

Name of ASVCP member at this Institution: \_\_\_\_\_

**Personal Set or Presenter Set** (if your submission is accepted). Availability of Personal Sets is based on earliest postmark dates on order.

Address to which the 2008 Case Set (to be distributed in October) should be sent:

Name: \_\_\_\_\_

Address: \_\_\_\_\_

\_\_\_\_\_

\_\_\_\_\_

E-mail \_\_\_\_\_

Date ordered: \_\_\_\_\_

Credit Card Number: \_\_\_\_\_ Expiration Date: \_\_\_\_\_

Signature: \_\_\_\_\_

You may fax your credit card order to: 608-443-2474.

Mail a check payable to ASVCP with a copy of this order form to:

ASVCP National Office: ATTN: Case Review Sets  
2810 Crossroads Drive, Ste. 3800  
Madison, WI 53718