

PLACE  
POSTAGE  
HERE

**ASVCP MEMBERSHIP DEPARTMENT**  
2424 American Lane  
Madison, WI 53704 USA

FOLD ON DOTTED LINE AND TAPE CLOSED - DO NOT STAPLE

*Publishing your research in  
**VETERINARY CLINICAL PATHOLOGY**  
now includes:*

- Easy online submission and manuscript tracking with Manuscript Central
- No submission fees or page charges
- Free color images (in print and online)
- Rapid publication with Early View
- Free author PDF and discounted reprints
- See [www.blackwellpublishing.com/vcp](http://www.blackwellpublishing.com/vcp) for free online content and E-alerts

**Visit our website at**

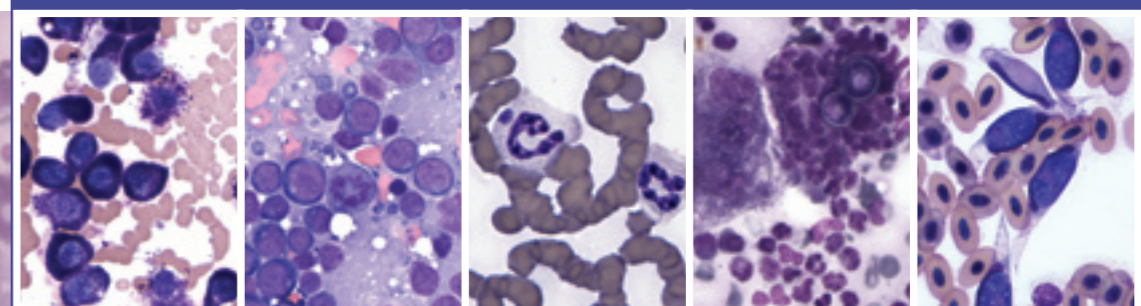
**www.asvcp.org**

and explore how membership in our society can benefit you and your career!



American Society for  
Veterinary Clinical Pathology  
2424 American Lane  
Madison, WI 53704 USA

PLACE  
POSTAGE  
HERE



**www.asvcp.org**

**ASVCP**  
American Society for  
Veterinary Clinical Pathology



EDUCATION • RESEARCH • DIAGNOSTICS • DRUG DISCOVERY

**Membership Information**

**Join Today!**

# The American Society for Veterinary Clinical Pathology (ASVCP)

Join your peers in this international organization with over 500 members representing various interests including:

- Biomarkers and molecular diagnostics
- Blood gas analysis and interpretation
- Clinical chemistry and endocrinology
- Coagulation and hemostasis
- Cytopathology
- Education in clinical pathology
- Exotic and zoo animals
- Hematopathology
- Immunocytochemistry
- Immunohematology and transfusion medicine
- Investigative/experimental clinical pathology
- Laboratory management
- Laboratory animal species
- Pathophysiology
- Quality assurance and standards
- Toxicologic clinical pathology

The ASVCP is a leader in promoting clinical and diagnostic laboratory standards and providing guidance on regulatory and quality assurance issues. Important initiatives that strengthen our industry's future include support of training programs, externship opportunities, and travel and research awards.



Membership is open to anyone with an interest in veterinary or comparative clinical pathology, from veterinary students to laboratory technologists, clinical veterinarians, veterinary specialists, and research scientists. Specialty groups within the ASVCP include a Veterinary Laboratory Professionals Group that focuses on professional development and issues facing laboratory scientists and a Toxicological Pathology Group that concentrates on matters related to pharmaceutical industry drug discovery and development.

## ANNUAL MEETING

The annual meeting of the ASVCP is held in late fall, in conjunction with the annual meeting of the American College of Veterinary Pathologists (ACVP). A substantially discounted registration fee is offered to ASVCP members.

The ASVCP meeting features:

- Keynote speakers and in-depth education symposia
- Scientific sessions and platform presentations
- In-depth educational seminars
- Pre-meeting workshops
- Mystery hematology and cytology slide sessions
- Clinical biochemistry case review session
- Roundtable discussions of laboratory issues
- Trainee reception and Young Investigator Award
- Reports on regulatory issues affecting the field
- Annual business meeting

## BENEFITS OF MEMBERSHIP

- Print and online access to all volumes of *Veterinary Clinical Pathology*, a leading international journal published by the ASVCP. *Veterinary Clinical Pathology* is widely indexed and also serves as the official journal of the European Society of Veterinary Clinical Pathology. Quarterly issues regularly feature:
  - Original high quality research and clinical investigations
  - State-of-the-art reviews
  - Special reports on current issues
  - "What is your diagnosis?" challenges
  - Case reports and brief communications
  - Laboratory Medicine: Yesterday - Today - Tomorrow
  - Book reviews
- Access to and participation in the ASVCP listserv. This forum provides members with instant access to experts and peers in veterinary clinical pathology for discussion of current cases, scientific topics, laboratory problems, diagnostic principles, etc.
- Participation in the hematology/cytology slide series and NEW clinical chemistry case sessions. These glass slides and case data summaries are a very popular member benefit. A great resource for teaching and studying!
- The ASVCP quarterly newsletter keeps you up to date on current society activities.

# MEMBERSHIP APPLICATION

Phone: 1-608-443-2479 • Fax: 1-608-443-2474  
E-mail: info@asvcp.org • Website: www.asvcp.org

NAME \_\_\_\_\_

ADDRESS FOR DIRECTORY \_\_\_\_\_

PHONE (Check:  office  home) \_\_\_\_\_

FAX NUMBER \_\_\_\_\_

E-MAIL \_\_\_\_\_

DEGREES: \_\_\_\_\_ UNIVERSITY: \_\_\_\_\_ YEAR: \_\_\_\_\_

BOARD CERTIFICATION (SPECIFY) \_\_\_\_\_

PRESENT POSITION \_\_\_\_\_

### PROFESSION/OCCUPATION

- Veterinarian  Intern/Resident/Graduate Student  Veterinary Student  CLS (clinical laboratory scientist)  
 Other laboratory professional (specify): \_\_\_\_\_

If elected to become a member of the American Society for Veterinary Clinical Pathology, I agree to abide by the principles and regulations as detailed in the Constitution and Bylaws of the Society.

SIGNATURE OF APPLICANT \_\_\_\_\_ DATE \_\_\_\_\_

CHECK THE APPROPRIATE MEMBERSHIP CATEGORY BELOW.

Payment is by check or money order in US currency (\$) or by credit card choices listed below.

\$100 for mailing addresses in the United States, Canada, and Mexico

\$110 for mailing addresses outside of North America

\$60 for veterinary medical students, interns, residents, and graduate students\*\*

\*\*Name and signature of mentor or faculty advisor \_\_\_\_\_

### METHOD OF PAYMENT

Check or  Money Order (payable to ASVCP in US dollars)  Visa  MasterCard

CARD NUMBER \_\_\_\_\_ EXPIRATION DATE \_\_\_\_\_

SIGNATURE \_\_\_\_\_